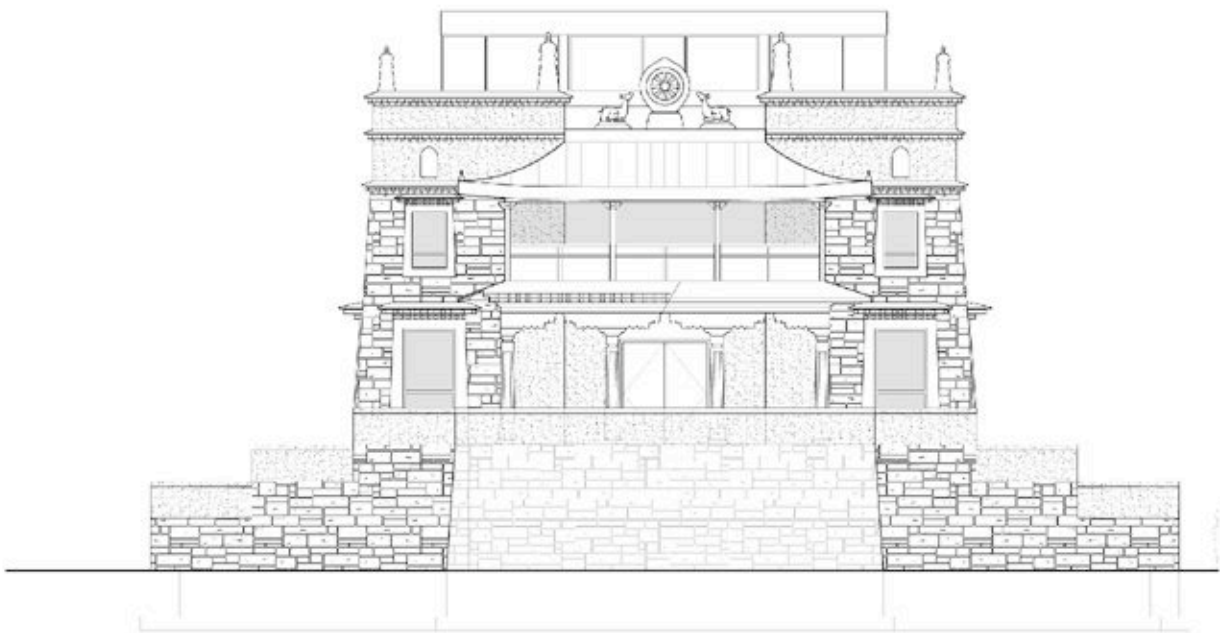


# THE TEMPLE PROJECT AT DEER PARK

*Case for Support*



**Deer Park Buddhist Center**  
Oregon, WI



## Deer Park Buddhist Center

Founded in 1975, current grounds acquired and consecrated in 1981 with the Kalachakra ceremony for World Peace by H.H. the Dalai Lama

Founder and Spiritual Director: Geshe Lhundub Sopa

Associate Teachers: Abbot Emeritus of Gyume Tantric College, Geshe Lobsang Tenzin  
Abbot Emeritus of Sera Je Monastery, Geshe Lobsang Donyo

*“A jewel in the heartland of America, where Tibetan Buddhism’s unique contribution to human culture, art and spiritual development prospers”*



*A watercolor rendering of Deer Park’s new Temple currently under construction*

## **Vision**

To ensure that Tibetan Buddhist teaching, art, and culture, and the monastic way of life remain available as a vibrant part of our common human legacy

## **Mission**

- ⌘ To support people's moral and spiritual growth as a means to bring about temporary and lasting peace, individually and throughout the world
- ⌘ To educate and inspire monastic and lay students in the philosophy and practice of Tibetan Buddhism
- ⌘ To serve as a monastery where people can experience Buddhism as a complete living tradition in a tranquil rural setting that is conducive to the contemplative lifestyle
- ⌘ To provide a sacred space for Buddhist teachings, literature, art and architecture
- ⌘ To sustain Tibetan culture in the diaspora

## **Unique Contribution**

Deer Park offers study and meditation programs under the guidance of a resident monastic community. As such, Deer Park is uniquely positioned to provide an experience of this integral part of the Buddhist path, and to teach by its example as well as by its words.





## Our Program Offerings

Deer Park teaches and practices Tibetan Buddhism through seven major areas:

- ⌘ Education and monastic training
- ⌘ Community Outreach
- ⌘ Interreligious Dialogue
- ⌘ Group Spiritual Practice
- ⌘ Service
- ⌘ Publication
- ⌘ Tibetan Art, Architecture, and Cultural Preservation





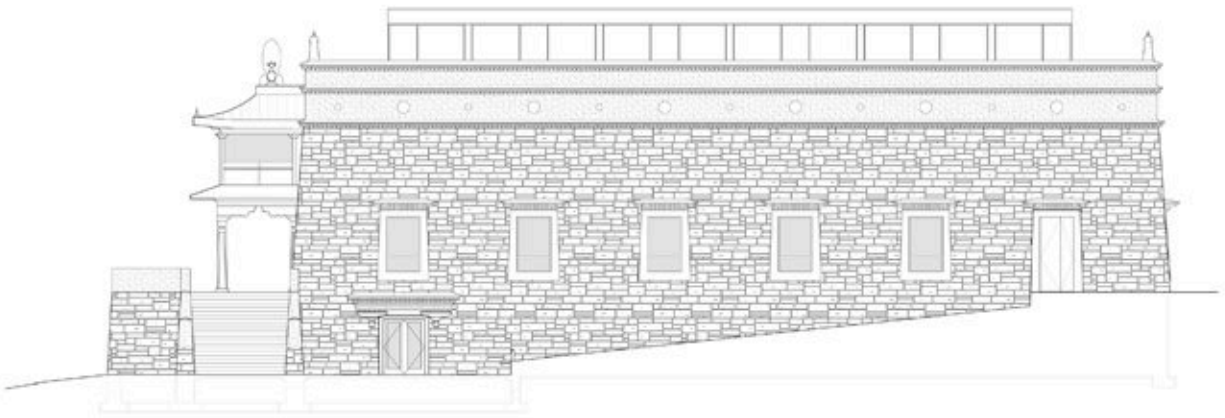


## Historic and Current Significance

- ⌘ Deer Park is the only full-scale monastic and teaching center upholding His Holiness the Dalai Lama's tradition in the Midwest
- ⌘ Deer Park is the site of the first Kalachakra ceremony for world peace ever performed in the West by H.H. the Dalai Lama
- ⌘ Deer Park's guiding spirit, Geshe Lhundub Sopa, is recognized worldwide as one of the great living spiritual masters of the Tibetan Buddhist tradition
- ⌘ People travel from around the world to attend Deer Park's programs—from France, England, Mexico, mainland China, Taiwan, and more
- ⌘ Schoolchildren from across the region receive rare multi-cultural exposure on their annual field trips to Deer Park
- ⌘ Deer Park maintains an extensive archive of rare Buddhist teachings, Tibetan art, and cultural artifacts
- ⌘ Programs are offered to the public free of charge, reflecting a commitment to offering universal access

## To Actualize Our Vision

- Step One: Constructing a New Temple
- Step Two: Restoring the Old Temple and Stupa Monument
- Step Three: Building an Endowment Base



## **Project Benefits**

### **The new temple will:**

- ⌘ Increase capacity for Buddhist education, group spiritual practice, outreach, and interreligious programs
- ⌘ Create classroom space, so Tibetan children can study their native language and Buddhist cultural traditions
- ⌘ Offer much-needed resources for a growing community, with several thousand visitors per year
- ⌘ Provide ample space to display Deer Park's collection of Tibetan art, cultural artifacts, and sacred literature, including the Buddhist canon
- ⌘ Showcase the visually striking traditions of Tibetan architecture, supported by modern, environmentally sensitive and sustainable construction technologies
- ⌘ Spiritually inspire people of all faiths

### **Restoring the old temple and stupa monument will:**

- ⌘ Reinvigorate sacred structures that are of historical significance and spiritual meaning
- ⌘ Offer additional space for smaller, more intimate community activities



**Building an endowment base will:**

- ⌘ Ensure financial health and stability in order to underwrite and grow high-quality programs and services
- ⌘ Allow programs to be offered to the public at no charge
- ⌘ Sustain the pure tradition of Tibetan Buddhism, and make it accessible to all



## Scale of Giving

### *I. Building Capital – \$6.1 Million*

*(This includes the Tibetan Art Projects (TAP))*

Gift Size	Number of Gifts	Total	Cumulative Total
\$1 million	1	\$1 million	\$1 million
\$500,000	3	\$1.5 million	\$2.5 million
\$250,000	4	\$1 million	\$3.5 million
\$100,000	6	\$600,000	\$4.1 million
\$50,000	8	\$400,000	\$4.5 million
\$25,000	15	\$375,000	\$4.875 million
Other	Many	\$1.225 million	<b>\$6.1 million</b>

### *II. Old Temple Renovation \$500,000 & Operating Costs \$500,000*

**Total \$1 million**

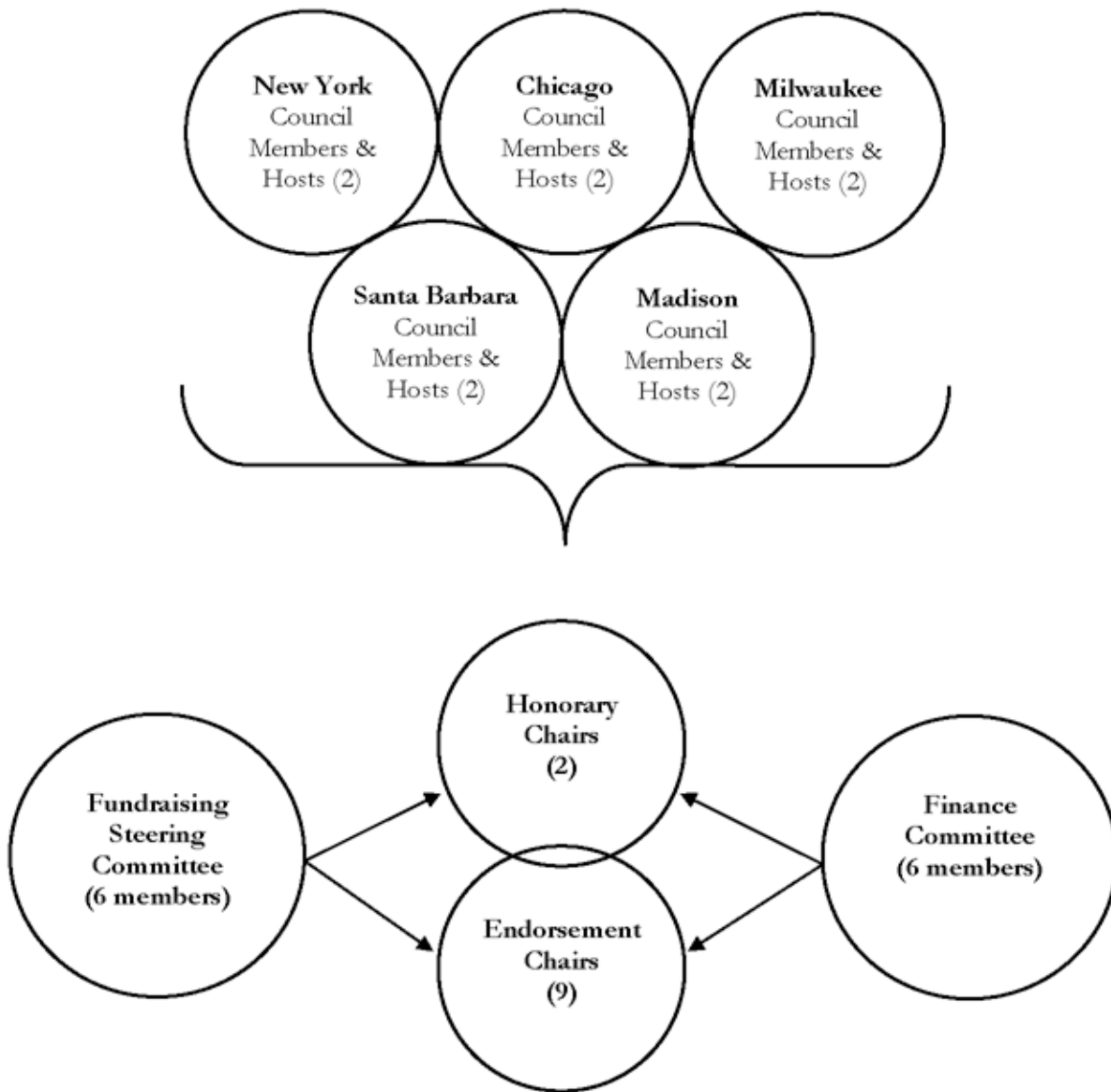
### *III. Endowment Capital – \$10 Million*

Gift Size	Number of Gifts	Total	Cumulative Total
\$3 million	1	\$3 million	\$3 million
\$1 million	3	\$3 million	\$6 million
\$500,000	5	\$2.5 million	\$8.5 million
\$250,000	6	\$1.5 million	<b>\$10 million</b>

**\$1.6 million in gifts has been received. \$900,000 has been pledged.**

**To be raised: \$4.6 million (Parts I & II)  
\$10 million endowment (Part III)**

# Campaign Organization Chart





## Leadership

### *Corporate Officers*

- ⌘ President: Geshe Lhundub Sopa, Professor Emeritus, University of Wisconsin-Madison
- ⌘ Vice President: Geshe Lobsang Donyo, Abbot Emeritus of Sera Je Monastery
- ⌘ Secretary: Rodney Stevenson & George W. Chesrow
- ⌘ Treasurer: George Propps

### *Honorary Chairs*

- ⌘ Geshe Lhundub Sopa
- ⌘ Geshe Lobsang Tenzin, Abbot Emeritus of Gyume (Lower Tantric) Monastery

### *Endorsement Chairs*

- ⌘ Lama Zopa Rinpoche  
(Spiritual Director, Foundation for the Preservation of the Mahayana Tradition, San Jose, CA)
- ⌘ Thomas and Margot Pritzker  
(Chicago, IL)
- ⌘ Ed Bastian, Ph.D.  
(President, Spiritual Paths Foundation, Santa Barbara, CA)
- ⌘ Frederick and Anne Vogel and Family  
(Art Historians and Museum Trustees, Milwaukee, WI)
- ⌘ Richard Gere (President, Healing the Divide Foundation, New York, NY)
- ⌘ Jessica Lange (Actress, New York, NY)
- ⌘ Frank Tsou and Helen Du  
(QVS Incorporated & Du International, Las Vegas, NV)
- ⌘ P. Jeffrey Hopkins, Ph.D.  
(Professor Emeritus of Indo-Tibetan Studies, University of Virginia)
- ⌘ Sister Joan Chittister, OSB  
(Peace Councilor/International Committee for the Peace Council, Erie, PA)

### *Fundraising Steering Committee*

- ⌘ Robert Gore
- ⌘ Ani L. Jampa (Alicia H. Vogel)
- ⌘ Frank Barone
- ⌘ Valerie Thrush
- ⌘ Mary Bennett
- ⌘ Michael Hernke

### *Building Committee*

- ⌘ Geshe L. Sopa
- ⌘ Ani L. Jampa (Alicia H. Vogel)
- ⌘ Michael Atkins
- ⌘ Penny Paster
- ⌘ Christopher Goodrich

**The Temple Project at Deer Park: Tibetan Art Projects (TAP)**

*Works of Art for Sponsorship*

**Deer and Wheel**

འོ་ལུགས་ཚོས་ལོང་



*Combined 10'x 8' \$16, 750 Note: Already Sponsored*

**Main Door Pulls**

སྐྱབས་ལུང་ལྷུང་ཅན་



\$3700

**Medallions**

ཕྱིན་རྒྱུན་



\$315

These symbolic works of art will be crafted in India by Tibetan and Indian artisans, and onsite by Tibetan artisans. Sponsorship costs include design and installation.

Many other works await donation--a full catalogue is available upon request.

*Please join us in creating a landmark of Tibetan Buddhist culture in the Midwest.*

## The Lineage Continues: A Partial List of Geshe Sopa's Students

### **James Apple, Ph.D.**

Department of Religious Studies  
University of Alberta, Canada

### **Anthony W. Barber, Ph.D.**

Associate Professor of Eastern Religions  
University of Calgary, Alberta, Canada

### **Edward W. Bastian, Ph.D.**

Community Board Member - Aspen Institute  
President of The Spiritual Paths Institute/Foundation  
Entrepreneur, author and filmmaker

### **James Blumenthal, Ph.D.**

Associate Professor of Buddhist Philosophy & Indian and  
Tibetan Intellectual History  
Oregon State University

### **Jose Cabezon, Ph.D.**

Professor of Tibetan Religions, Culture, and Language  
University of California - Santa Barbara  
Interpreter for the Dalai Lama

### **Paul Donnelly, Ph.D.**

Assistant Professor of Religious Studies  
Northern Arizona University

### **Artemus Engle, Ph.D.**

Buddhist scholar and author  
Howell, New Jersey

### **Jeffrey Hopkins, Ph.D.**

Professor Emeritus of Indo-Tibetan Buddhist Studies  
University of Virginia - Interpreter for the Dalai Lama

### **Natalie M. Hauptman, Ph.D.**

Department of Humanities  
Manhattan School of Music, New York, N.Y.

### **David F. Germano, Ph.D.**

Associate Professor of Buddhist and Tibetan Studies  
University of Virginia  
Director of the Tibetan and Himalayan Digital Library

### **Roger R. Jackson, Ph.D.**

Professor of Religion and the Liberal Arts  
Carleton College, Northfield, Minnesota

### **John Makransky, Ph.D.**

Associate Professor of Theology  
Boston College

### **Beth Newman, Ph.D.**

South Asian Civilization and Culture  
Ringling School of Art and Design  
Sarasota, Florida

### **John Newman, Ph.D.**

Associate Professor of Asian Religions  
New College of Florida, Sarasota, Florida

### **David Patt, Ph.D.**

Outreach Coordinator for the East Asia Program  
Cornell University, Ithaca, New York

### **James Robinson, Ph.D.**

Associate Professor of Philosophy & Religion  
University of Northern Iowa

### **Carol Savvas, Ph.D.**

School of Continuing and Professional Studies  
New York University

### **Beth Simon, Ph.D.**

Department of English and Linguistics  
Indiana University/Purdue University - Fort Wayne  
Creative Fiction/non-fiction writer and poet

### **Michael Sweet, Ph.D.**

Buddhist scholar and author  
Madison, Wisconsin

### **Leonard Zwilling, Ph.D.**

Buddhist scholar and author  
Madison, Wisconsin

### **SPIRITUAL TEACHERS:**

**Lama Yeshe** - Co-founder of the Foundation for the Preservation of the Mahayana Tradition (FPMT) - an international, non-profit organization of Buddhist centers, publishers, and community service groups.

**Lama Zopa Rinpoche** - Co-founder of the Foundation for the Preservation of the Mahayana Tradition (FPMT)

### **Geshe Jampa Tekchog**

Abbot Emeritus - Sera Je Monastic University  
Bylakuppe, Karnataka India

### **Geshe Lobsang Tenzin**

Abbot Emeritus - Gyume Tantric College  
Hunsur, Karnataka India

### **Geshe Lobsang Donyo**

Abbot Emeritus - Sera Je Monastic University  
Bylakuppe, Karnataka India

### **Geshe Lobsang Tsering**

Abbot Emeritus - Sera Je Monastic University  
Bylakuppe, Karnataka India

### **Venerable Thubten Chodron**

Fully ordained Buddhist Nun  
Author, International Buddhist teacher  
Founder of Sravasti Abbey, Newport, Washington

### **John Makransky, Ph.D.**

Dzogchen Center, Cambridge, Massachusetts



*May the teachings that are a true medicine  
for the suffering of sentient beings,  
and the source of permanent peace and joy,  
be materially supported and appropriately honored.  
May they abide for a long, long time.*

*—Shantideva*



*For more information, please contact:*

## **Deer Park Buddhist Center**

4548 Schneider Drive  
Oregon, WI 53575

608-882-3917 (The Temple Project)  
608-835-8735 (Tibetan Art Projects (TAP))  
608-835-5572 (Center phone)

[www.deerparkcenter.org](http://www.deerparkcenter.org)

