

The Temple Project at Deer Park: Tibetan Art Projects (TAP)

For more information, please contact:

Deer Park Buddhist Center

4548 Schneider Drive
Oregon, WI 53575

608-882-3917 The Temple Project
608-835-8735 Tibetan Art Projects (TAP)
608-835-5572 Center Phone

www.deerparkcenter.org



འདུ་ཁང་གསར་དཀ

༡༡། གངས་ཚན་གྱི་ཐུན་མོང་མིན་པའི་ལག་རྩལ།

Deer Park's New Temple

*Celebrating Tibetan Buddhist Culture
in the Heartland of America*



Artist's rendering of new temple at Deer Park Buddhist Center

Main Entry

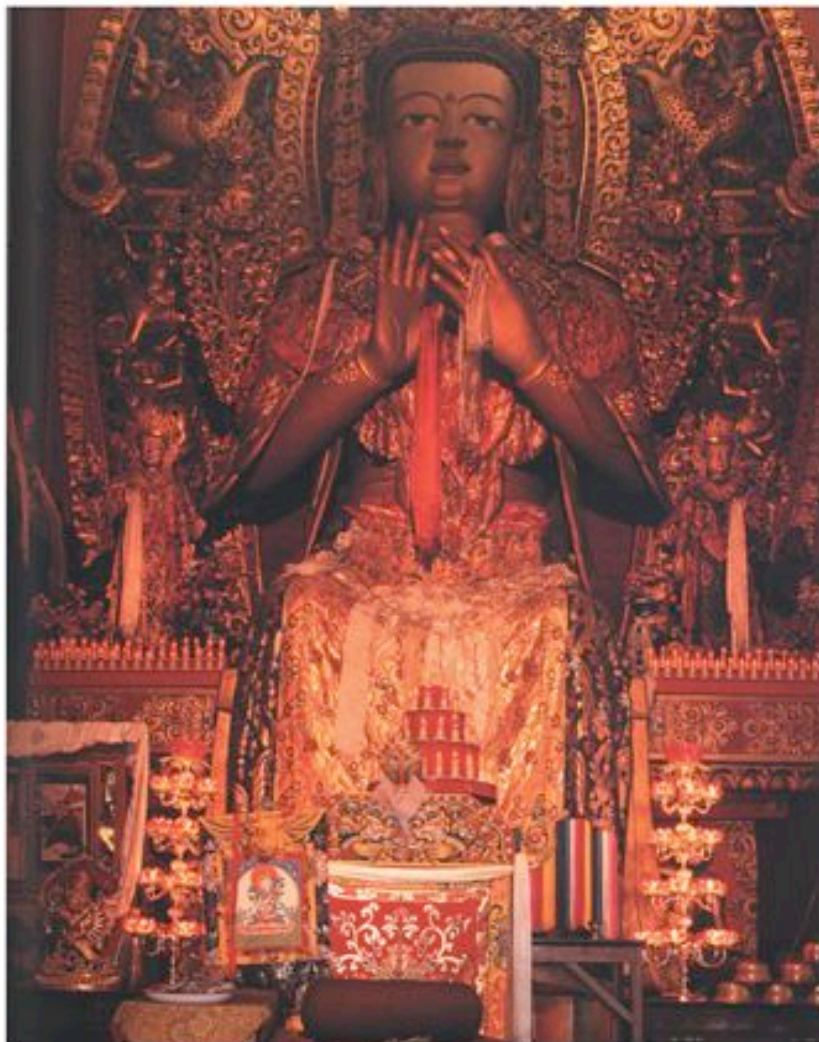
གཞུང་སློབ་དང་དེའི་རེབ་གཞི་



10'x12' \$31,500

"The Door to Liberation." Richly carved and painted with symbols that include vajras (diamond scepters), lotus petals, stylized representation of stacked scriptures and wish-granting jewels.

Traditional Altar Framework མཚོན་བཤམས་



Carved and painted decorative framework to house the holy objects and offering substances. The principle statues are: 7-foot Shakyamuni Buddha, 5-foot Lama Atisha and Lama Tsongkapa, 4-foot thousand-armed Avalokiteshvara, and 4-foot Maitreya.

Introduction

Deer Park Buddhist Center is a historical and sacred site, often referred to as “a jewel in the heartland of America.” It was the site of the first Kalachakra ceremony for world peace performed in the West by His Holiness the Dalai Lama, and has hosted extensive teachings by other great spiritual leaders. The current construction of a new temple at Deer Park will culminate in a consecration ceremony by His Holiness in the fall of 2007.

The new temple at Deer Park has been designed to support both Tibetan Buddhist spiritual practices and teaching, as well as the cultural life of the Tibetan community in exile. It will not only house spaces for Buddhist teachings, Tibetan art and culture, but will also be an expression of the very ideals to which the spiritual community aspires.

The Tibetan Art Projects (TAP) that are listed in this catalogue represent a range of traditional Tibetan arts, including painting, sculpture, metalwork, woodwork, and more, that are planned for implementation after the temple structure has been completed. The projects are an integral part of the building's purpose as a center for Tibetan Buddhist teachings and culture, and will ensure the continuance of a 1,000-year Himalayan artistic tradition.

Traditional Tibetan art and architecture are rich with Buddhist symbols reflecting the significant historical lineage of Tibetan Buddhism and its culture. For example, the decorative interior and exterior woodwork integrate Buddhist symbols such as lotus flowers, wish-granting jewels, the eight auspicious signs, vajra or diamond scepters, mythical crocodiles, the five colors (indicating the five aggregates, five types of wisdom, and five Buddha families, etc.), and many other stylized symbols of higher meaning.

The temple's designers have worked to ensure a balance of tradition, beauty and durability in the materials and methods chosen to implement the TAP items. The projects include works of art created with traditional materials and processes as well as traditional designs fabricated in contemporary materials. There will be sculpture in wood, clay, and hand hammered copper relief where appropriate, but there will also be durable fiber-reinforced plastic casting for certain exterior ornamentation. The traditional wooden beam-ends formed from bundles of “pema” sticks will be replicated in cast stone and pre-cast concrete. The interior TAP projects will include highly detailed, traditional ornamental painting, woodwork and gold gilding.

The Tibetan artist, Sonam Mathegonga is guiding the Tibetan and Indian artisans in South India in crafting the rooftop sculpture made out of contemporary materials and the hand hammered copper medallions. Four artisans from Lhasa will work on site to craft the interior and exterior woodwork and painting, with volunteer help from local artisans.

Geshe Lhundub Sopa, Deer Park's guiding spirit as Director and Abbot, dreamed of building an enduring structure, visually striking and spiritually inspiring. The Tibetan Art Projects are a true confluence or “act of flowing together” of spirituality and art, traditional craftsmanship and leading edge technology, East and West, Tibetan and American, ancient and contemporary.

Your support ensures the implementation of the Tibetan arts vital to the Temple Project. Please join us in creating a landmark of Tibetan Buddhist culture here in the Midwest.

TAP: Works of Art and Cost of Sponsorship

Interior Decorative Woodwork

འདུ་ཁང་གི་ཀ་བ་དང་གཏུང་མ་

Page	Item	Total Cost	Offered	Sponsored
1	Deer & Wheel	\$16,750	\$16,750	☞
2	Mythical Crocodile (2)	\$9,375	\$0	
3	Lotus Spire (2)	\$9,375	\$0	
4	Victory Spire (4)	\$17,500	\$0	
5	Medallions:	\$5,625	\$630	
	• Kalachakra Seed Syllable (2)	\$630	\$0	
	• Auspicious Symbols (16)	\$4995	\$4995	☞
6	Rabsal Balcony System:	\$310,000 (total)	\$0	
	• Roof	\$24,508	\$0	
	• 1st Fl. Entry Columns (6)	\$130,264	\$0	
	• 1st Fl. Beam/Gorok	\$55,323	\$0	
	• Upper Rabsal Handrail	\$2,599	\$0	
	• 2nd Fl. Columns/Capital (6)	\$2,706	\$0	
	• 2nd Fl. Beam/Gorok	\$55,795	\$0	
7	Rabsal Fascia (Upper)	\$21,250	\$0	
7	Rabsal Fascia (Lower)	\$17,500	\$0	
8	Pembay (Upper)	\$267,300	\$0	
9	Pembay (Lower)	\$94,600	\$0	
10	Window Canopies (19)	\$105,438	\$0	
11	Door Canopy	\$21,317	\$0	
12	Interior Decorative Woodwork:	\$130,300 (total)	\$0	
	• Interior Cornice	\$37,200	\$0	
	• Interior Columns (10)	\$93,000	\$0	
13	Decorative Altar Structure	\$150,000	\$0	
14	Main Entry	\$31,500	\$0	
	Total Project Cost	\$1,207,830	\$17,380	



Above: Interior columns and cornice under construction at Sera Monastery in Tibet

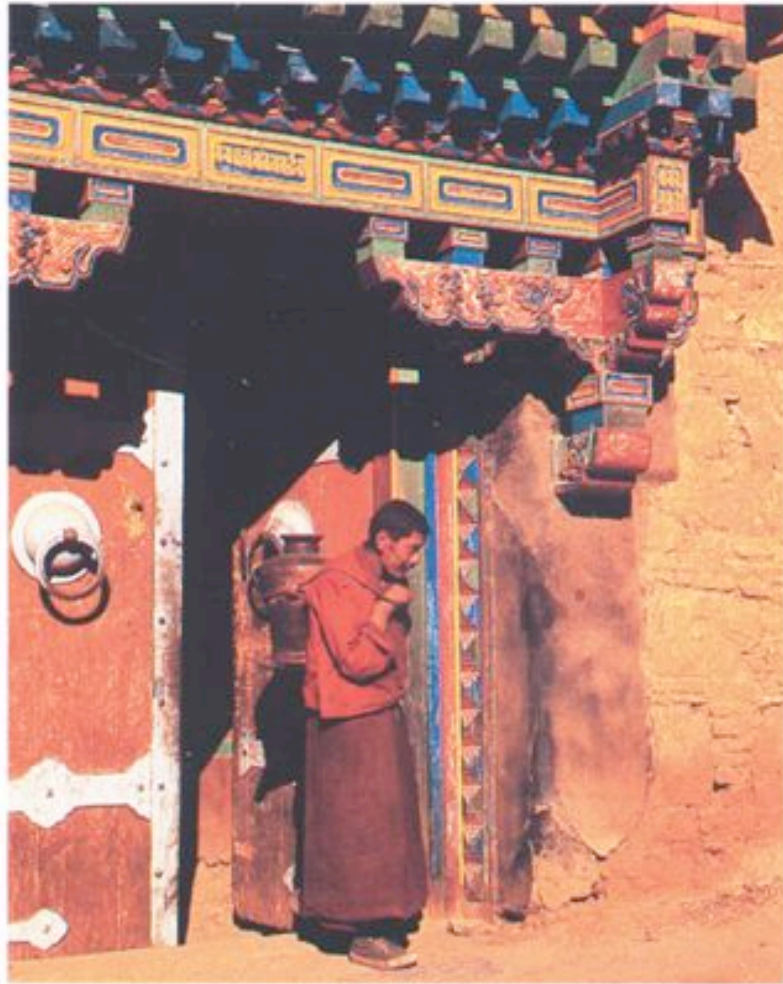
Left: Finished column and beam

Interior columns: 18' \$93,000

Interior cornice: 210' \$37,200

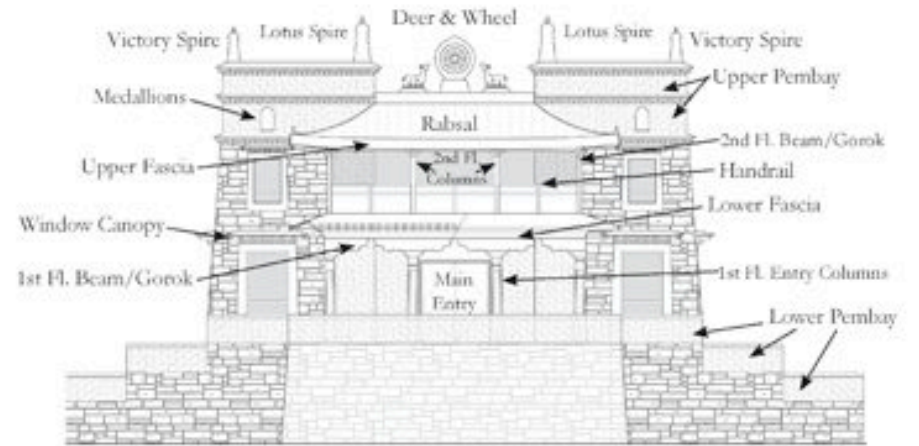
Door Canopy

ཚར་ཁྱེད་སེམས་

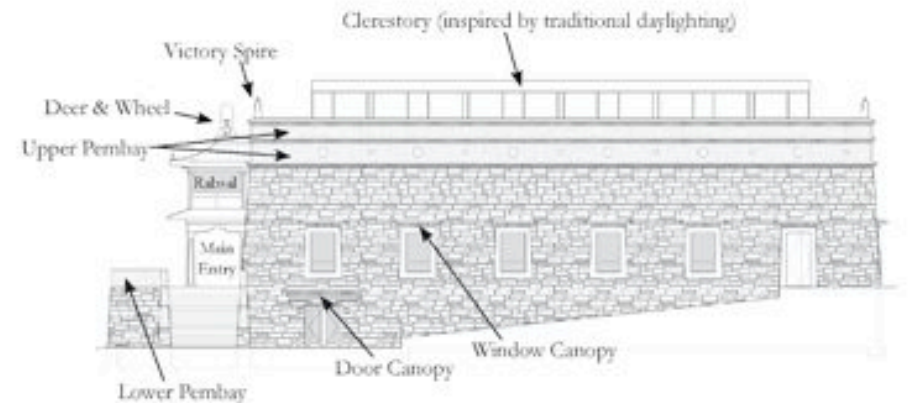


14x5' \$21,317

Deer Park Temple: TAP Placements



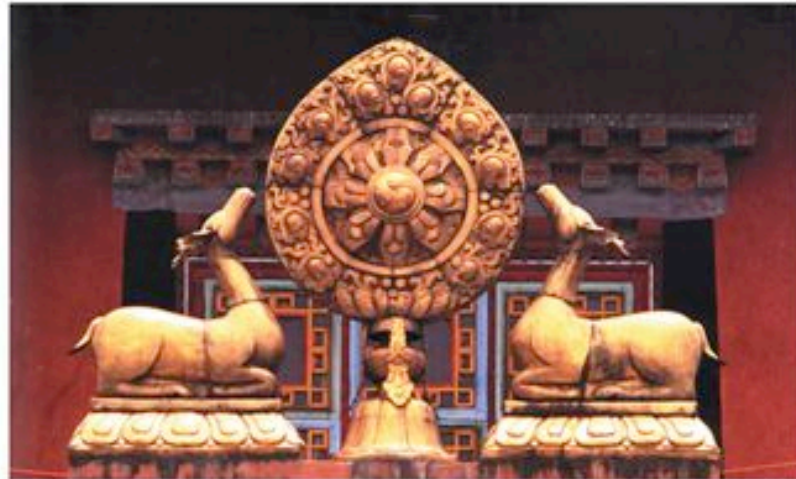
South Elevation



East Elevation

Deer and Wheel

འཇིགས་མེད་ལོ་ལོ་ལོ་ལོ་



Combined: 10'x8' \$16,750 Note: Already sponsored



*Artisans
in India
working
on our
deer*

The crown ornament of the temple, symbolizing the Buddha's teaching, its further dissemination, attractive nature, and therefore ability to subdue our minds.

Window Canopies

སྐོར་ལོ་ལོ་

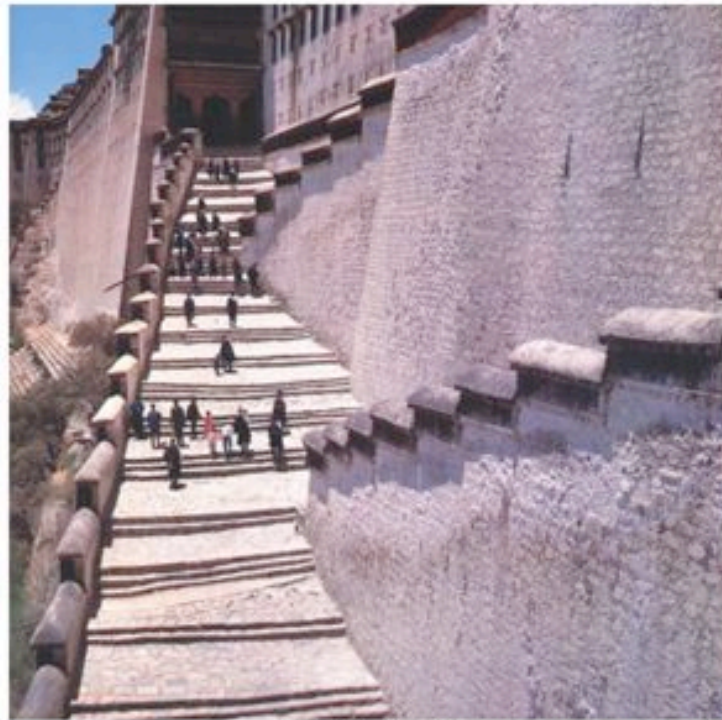


11'x3' \$105,438

Window canopy woodwork represents the layers of the dharma texts (the written teachings of the Buddha).

Lower Pembay

མེན་བང་



140'x3' \$94,600



Lower pembay on the Deer Park Temple

Mythical Crocodile

ཇེ་མེན་

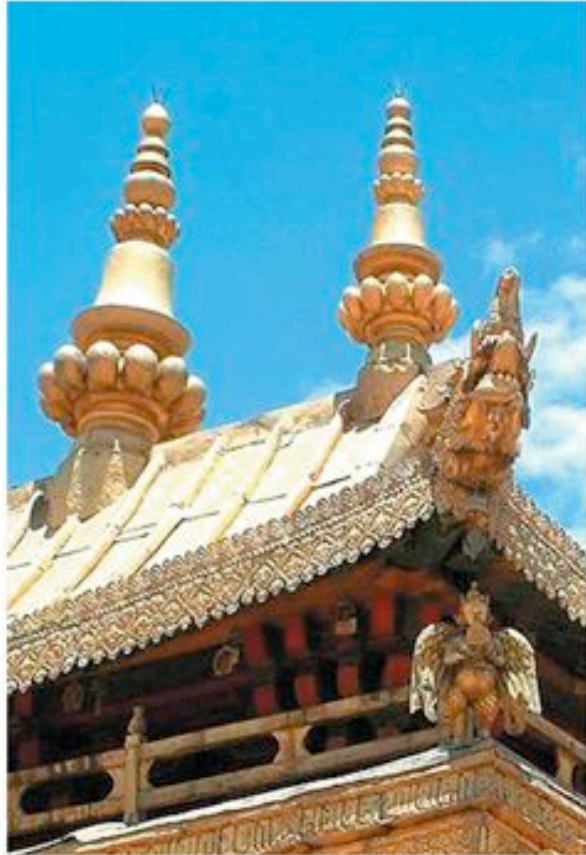


8'x8' \$4,688 each

This wrathful animal, a combined crocodile, dragon and snake, symbolizes victory over all forms of disharmony.

Lotus Spire

གན་རྩི་ར་

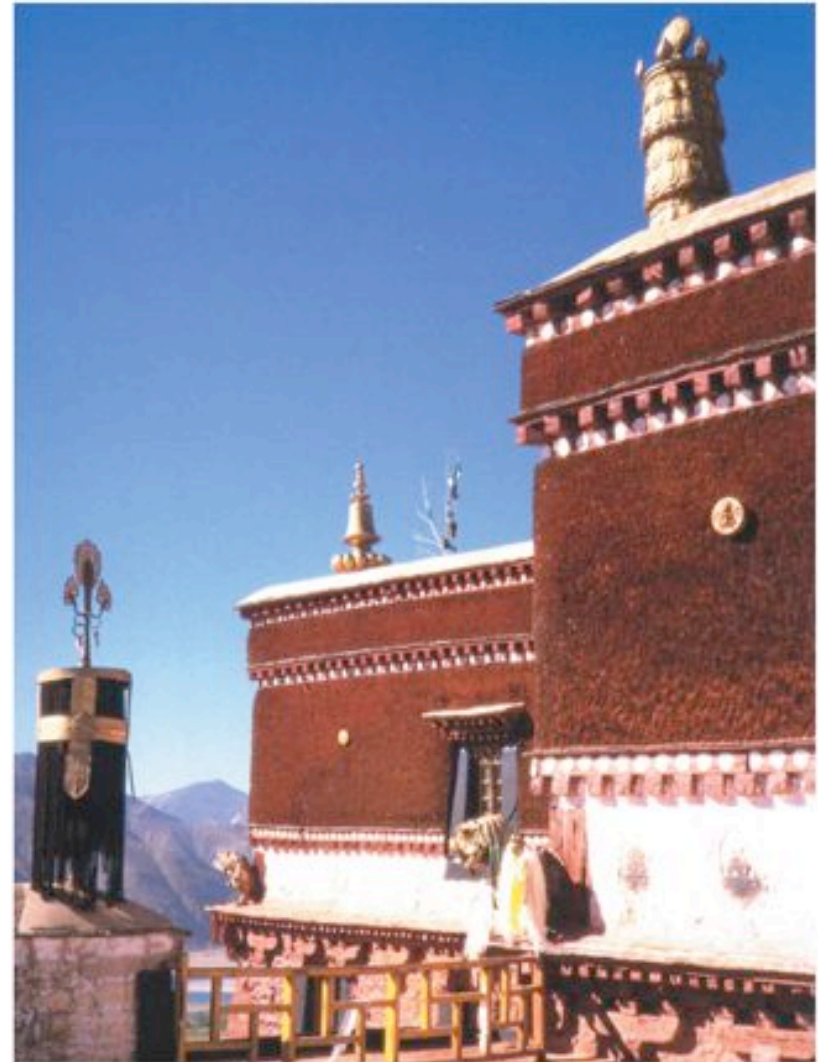


8'x8' \$4,688 each

A symbol of victory, comprised of three principle forms signifying the fully transformed and enlightened body, speech and mind.

Upper Pembay

ཐེན་བད་



340'x9' \$267,300

Rabsal Fascia

རབ་གསལ་གྱི་ཚུ་སྐྱོར་



Upper fascia: 12'x16' \$21,250 Lower fascia: 12'x14' \$17,500



Artisans installing fascia in Tibet

Serving as the rain gutter for the rabsal roof, comprised of two tiers—the upper fascia: stylized, open lotus petals and the six-syllable mantra of Avalokiteshvara, Om Mani Padme Hum; the lower fascia: one tier of lotus petal/cloud motif.

Victory Spire

གྲུལ་མཚན་



8'x8' \$4,375 each

A symbol of victory over negativity—for example, victory over the 84,000 types of destructive emotions.

Medallions

ཐཱ་ཀླུ་ཀྱི་



*The
Kalachakra
seed syllable
medallion:
Radiating
peace in a
world of
destruction*

Kalachakra seed syllable medallion 2'x2' \$315

Note: Already sponsored



*The lotus
medallion:
one of
eight
auspicious
symbols*

Lotus medallion 2'x2' \$315 each

Rabsal Balcony System

རབ་གསལ་



\$310,000 total



Rabsal woodwork detail

Rabsal Balcony System:

• Roof	\$24,508
• 1st Fl. Entry Columns (6)	\$130,264
• 1st Fl. Beam/Gorok	\$55,323
• Upper Rabsal Handrail	\$2,599
• 2nd Fl. Columns/Capital (6)	\$2,706
• 2nd Fl. Beam/Gorok	\$55,795

A traditional balcony design where the principle lama can reside and meet with visitors in a warm, sun-filled space with grand views. Comprised of carpentry, highly-decorative and symbolic carving and painting, with a golden half-pagoda roof.